



British  
Geological Survey

NATURAL ENVIRONMENT RESEARCH COUNCIL

Gateway to the Earth

# EuroGeoSurveys

a contributor and user of the KINDRA inventory

Rob Ward

Director of Groundwater Science

British Geological Survey

KINDRA Final conference

Making Groundwater Visible, Accessible and Treasured

27<sup>th</sup> February 2018



# EuroGeoSurveys

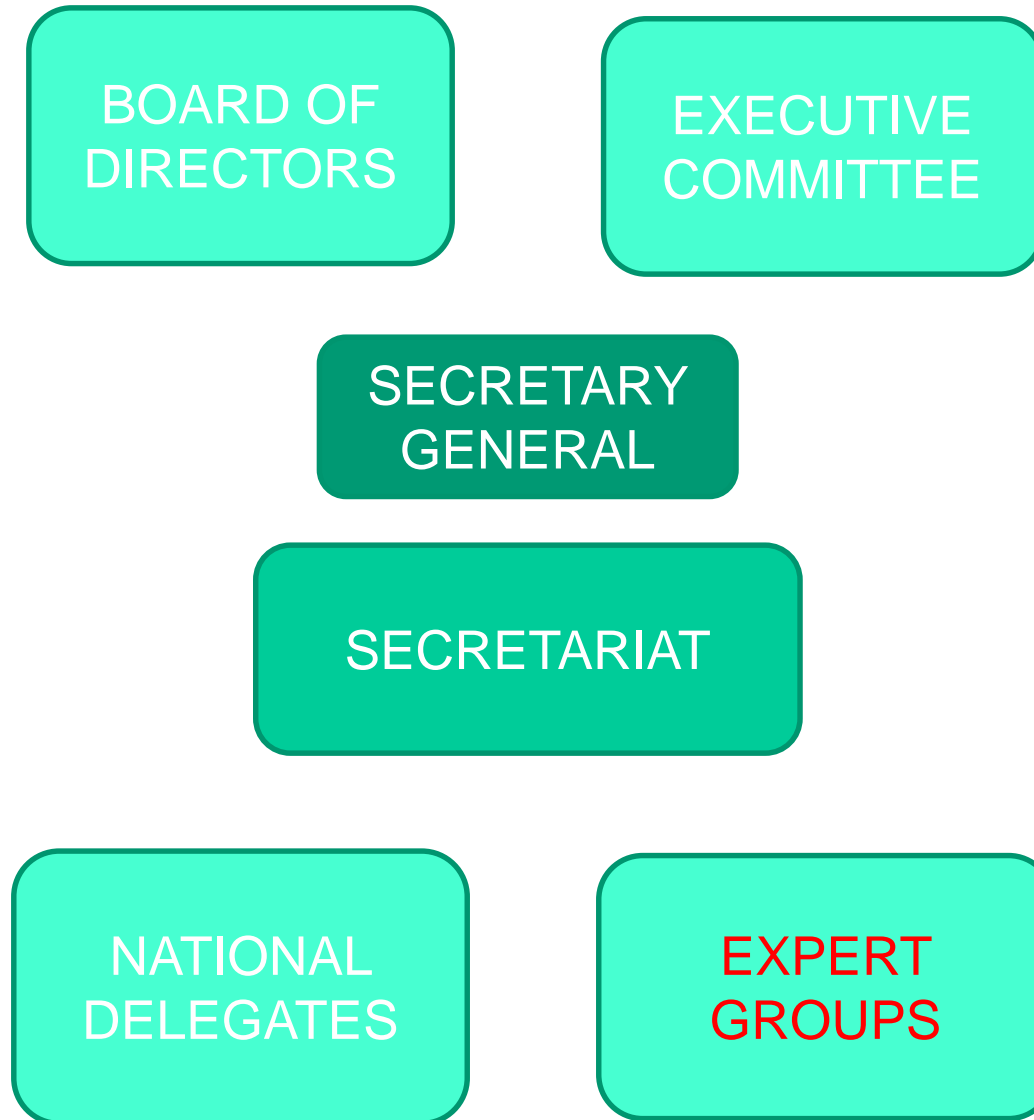
Confederation of 37  
Geological Surveys

Combined work force of  
SEVERAL THOUSANDS

Over 1 billion Euro  
*annual turnover*

Albania	Lithuania
Austria	Luxembourg
Belgium	The Netherlands
Bosnia & Herzegovina	Malta
Croatia	Norway
Cyprus	Poland
Czech Republic	Portugal
Denmark	Romania
Estonia	Russian Federation
Finland	Serbia
France	Slovakia
FYR.O.M.	Slovenia
Germany	Spain
Greece	Sweden
Hungary	Switzerland
Ireland	Ukraine
Italy	United Kingdom
Kosovo	
Latvia	

# EGS Organisation



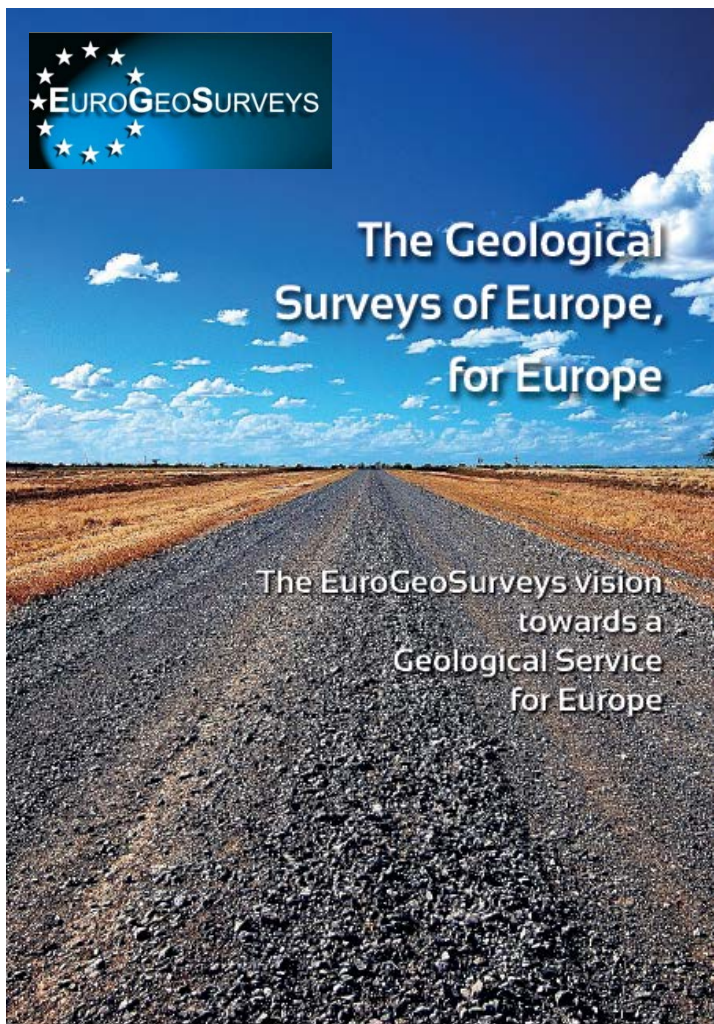
## SPATIAL INFORMATION (INSPIRE)



## MINERAL RESOURCES



## MARINE GEOLOGY



## GEOCHEMISTRY



## INTERNATIONAL COOPERATION AND DEVELOPMENT

## EARTH OBSERVATION AND GEOHAZARDS



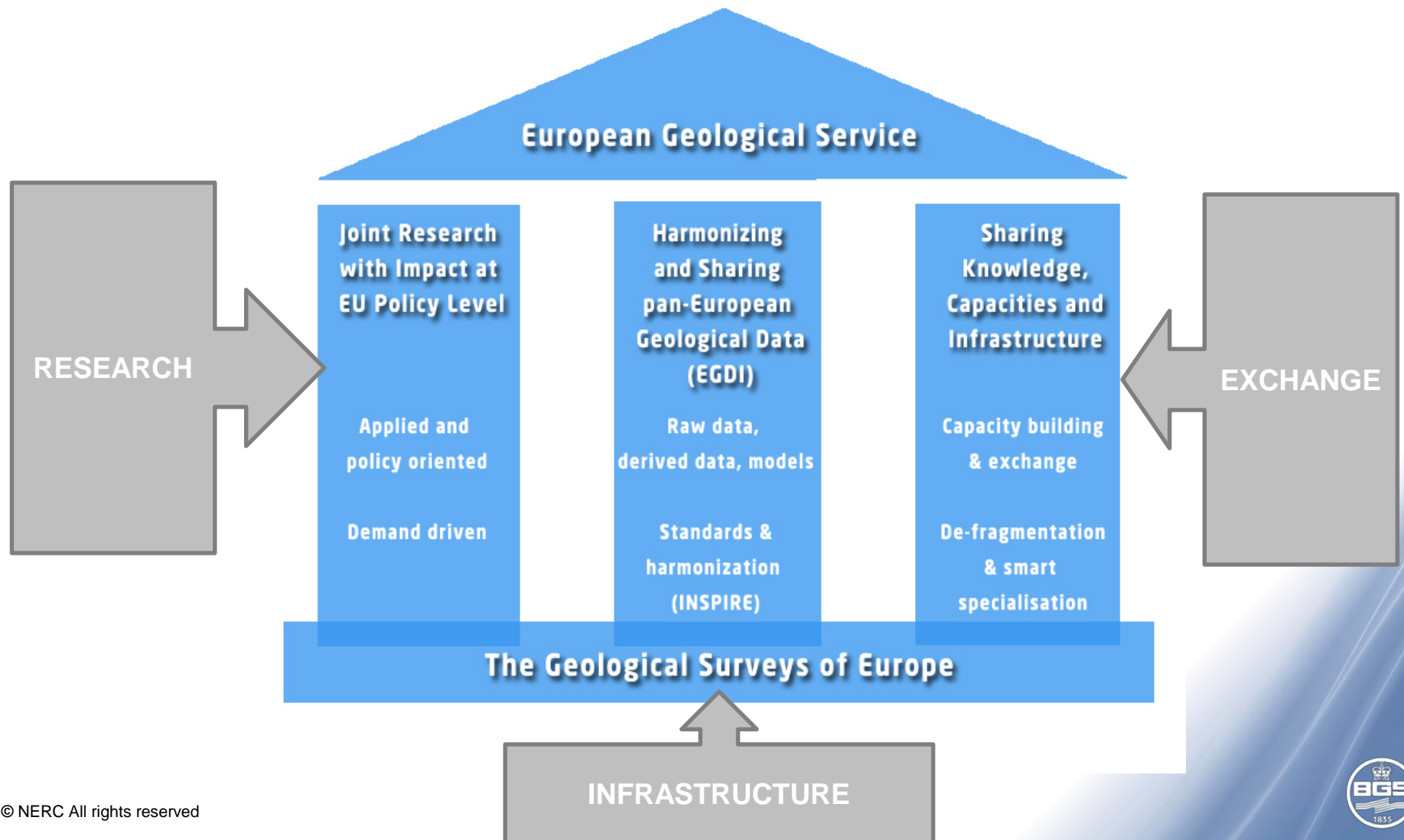
## GEOENERGY



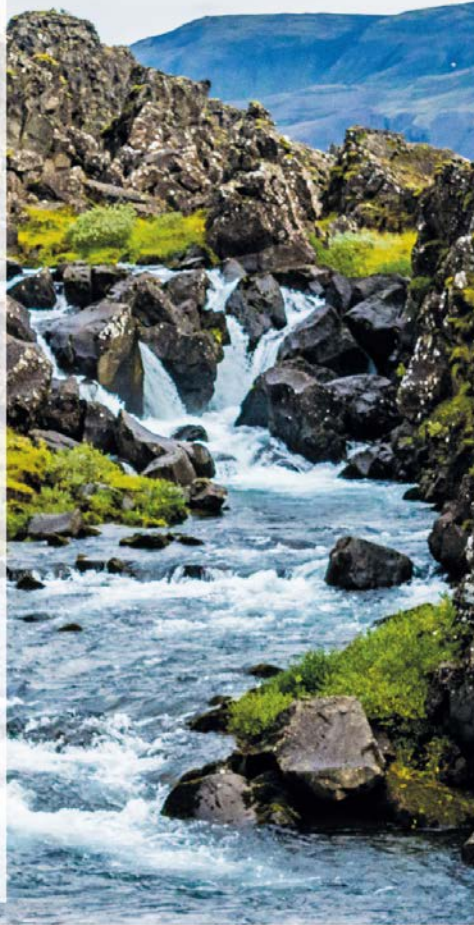
## WATER RESOURCES



# EGS Strategic Vision: towards a European Geological Service



## Water Resources Expert Group



- 65% of drinking water in EU from groundwater in some 100%
- GW is vulnerable to pollution and climate change
- WREG's mission is to provide information, advice and underpinning research to protect and sustain groundwater in Europe

WREG Chair: Klaus Hinsby [khi@geus.dk](mailto:khi@geus.dk) from GEUS  
<http://www.eurogeosurveys.org/expertgroups/water-resources/>



## Eurogeosurveys ERA-NET Co-Fund Action

- A EGS initiative to deliver a Geological Service for Europe (GeoERA) to:
  - *contribute to the optimal use and management of the subsurface*
- Delivered through a transnational research programme that supports:
  - *more integrated, efficient and responsible management of the subsurface, that is also publicly acceptable*
  - *promotes the role of the sub-surface in health, well-being, environment protection and economic growth*

**GeoERA**  
GROUNDWATER

**GeoERA**  
INFORMATION  
PLATFORM

**GeoERA**

**GeoERA**  
RAW MATERIALS

**GeoERA**  
GEO-ENERGY



# Groundwater in GeoERA



- **Objective:**

*to provide data, information and decision-support tools for the long-term protection, sustainable management and improvement of groundwater resources across Europe, within the framework of societal challenges and EU policies.*

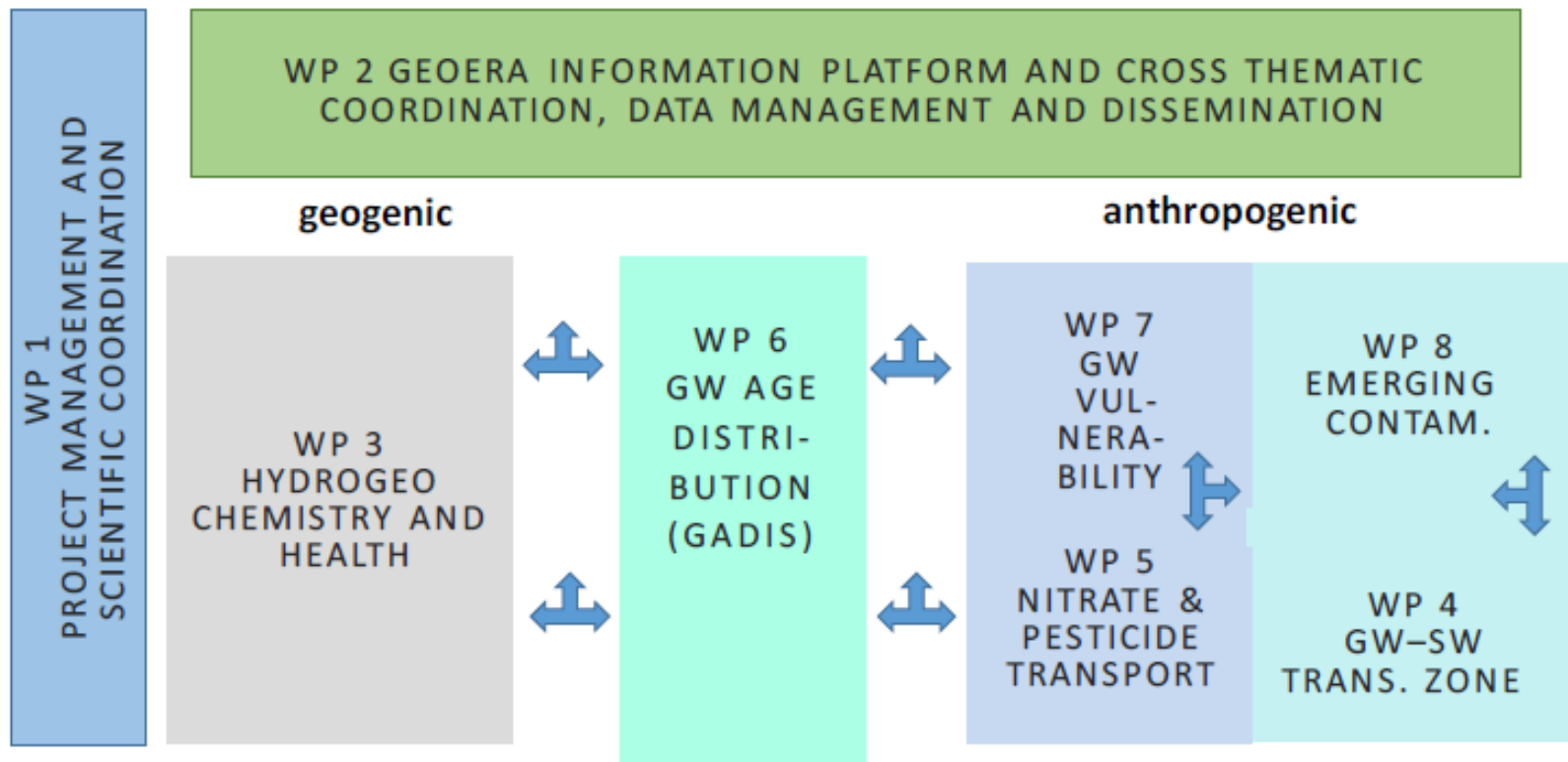
- Theme co-ordinator: KlausHinsby [khi@geus.dk](mailto:khi@geus.dk)

# Groundwater Topics

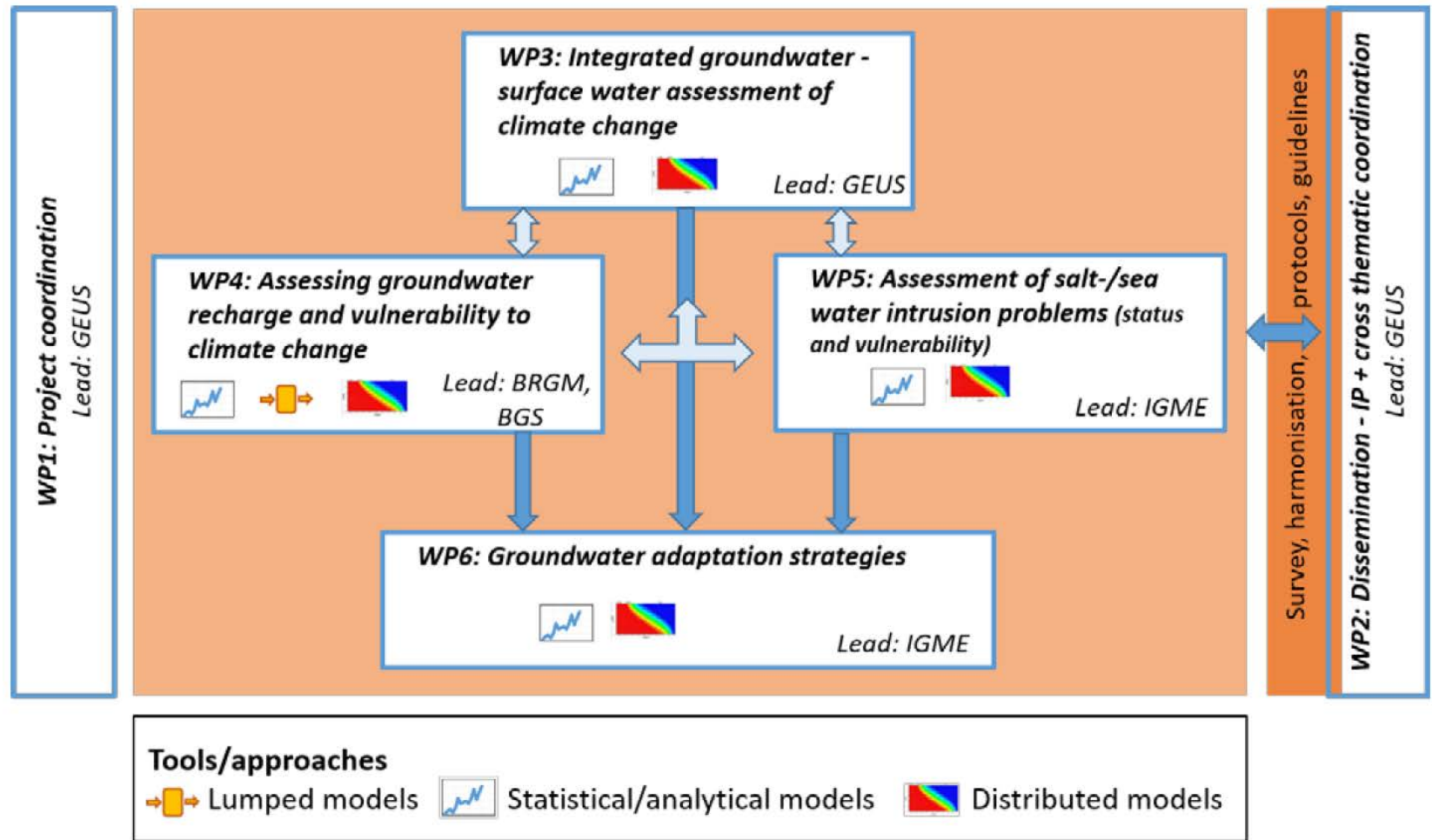


- GW1 - Drinking water, human & ecosystem health
- GW2 - Tools for climate change impact assessment and adaptation
- GW3 - Harmonization of groundwater information at multiple scales
- GW4 - Groundwater management and interactions with energy
- *Cross-cutting: information management and links to other GeoERA activities*

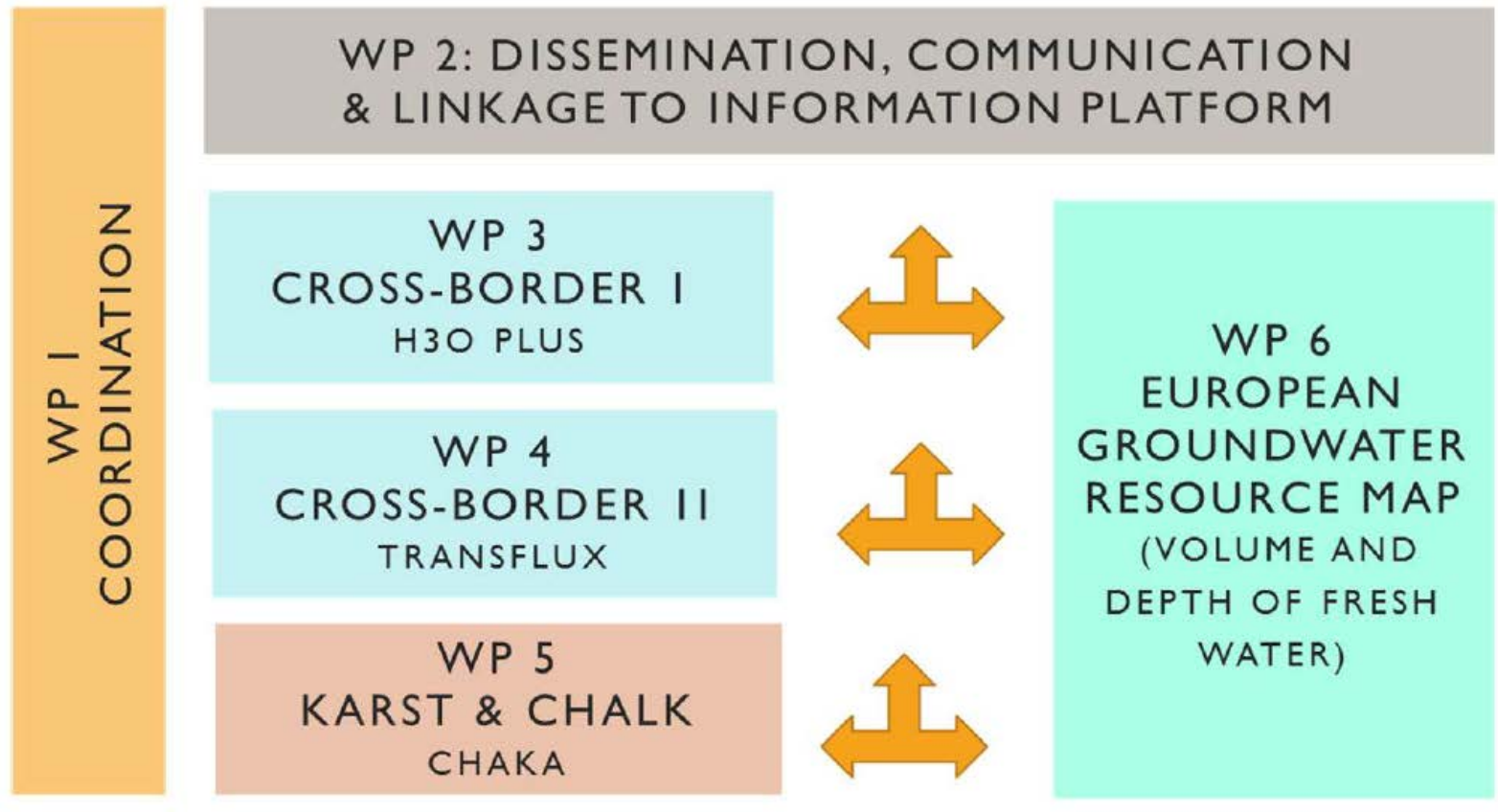
# GW1 – Drinking water, human and ecosystem health



# GW2 – Tools for climate change impact assessment and adaptation

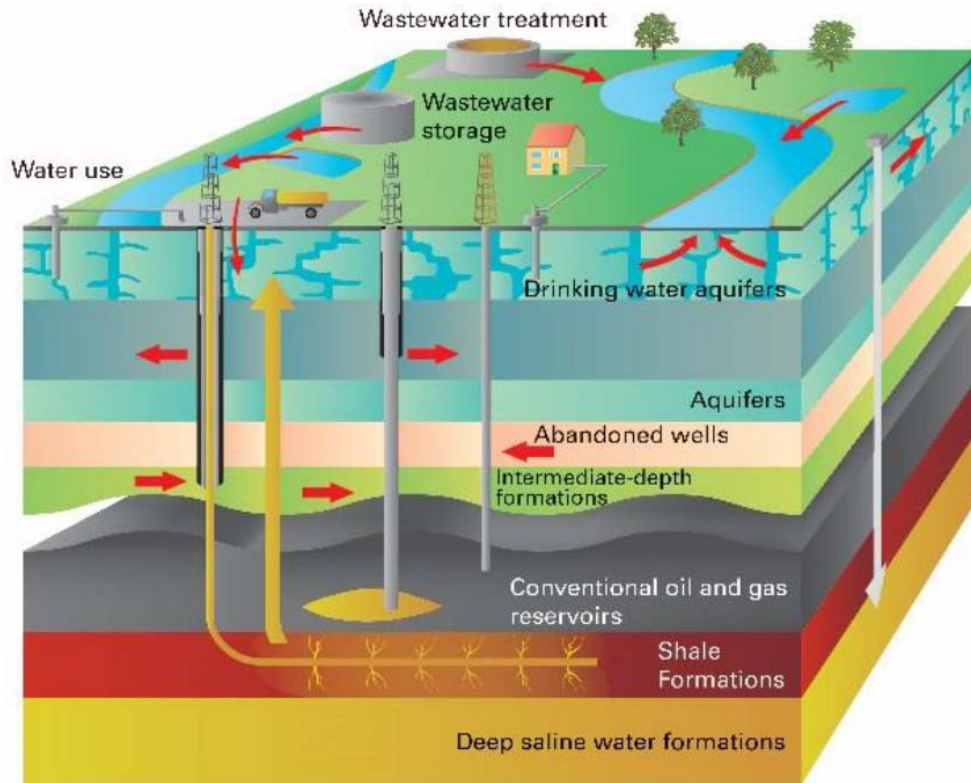


# GW3 - Harmonization of groundwater resources information



- H3O+ Demonstration project is to create harmonized information over the Dutch, Flemish and German area of the heavily utilised Roer Valley Graben
- TRANSFLUX – hydrodynamic model for a Lithuanian-Polish transboundary aquifer for long-term management

# GW4 - Vulnerability of Groundwater to Deep Energy Activities



WP 1  
COORDINATION AND  
MANAGEMENT

WP 3  
PROCESS UNDERSTANDING



WP 4  
CONCEPTUAL FRAMEWORK FOR RISK  
CHARACTERIZATION

WP 2: DISSEMINATION,  
COMMUNICATION  
& LINKAGE TO  
INFORMATION PLATFORM

# Conclusions

- EGS represents one of the largest networks of geoscientists in Europe
- It has a long track record of co-designed and collaborative and research of benefit to Europe
- EGS activities are already reflected in KINDRA EIGR
- The new GeoERA initiative will enable more information and knowledge sharing through EIGR

# THANK YOU

EuroGeoSurveys:

[www.eurogeosurveys.org](http://www.eurogeosurveys.org)

British Geological Survey:

[www.bgs.ac.uk](http://www.bgs.ac.uk)



# EuroGeoSurveys

cooperation is our strength and  
future

If you would like more information  
do not hesitate to contact us

EuroGeoSurveys Secretariat  
36-38, Rue Joseph II  
1000 Brussels, Belgium  
Tel : +32 2 888 75 53  
Fax : +32 2 503 50 25  
E-mail: [info@eurogeosurveys.org](mailto:info@eurogeosurveys.org)

# INTERNATIONAL COOPERATION

- EGS-OAGS
- EGS-ASGMI
- EGS-CCOP



# Ongoing and future EGS Secretariat projects 2017/2018

## Ongoing projects:

MICA

FORAM

PanAfGeo

PROSUM

EGDI

GEOERA

GEOCRADLE

INTERMIN

MINLAND

